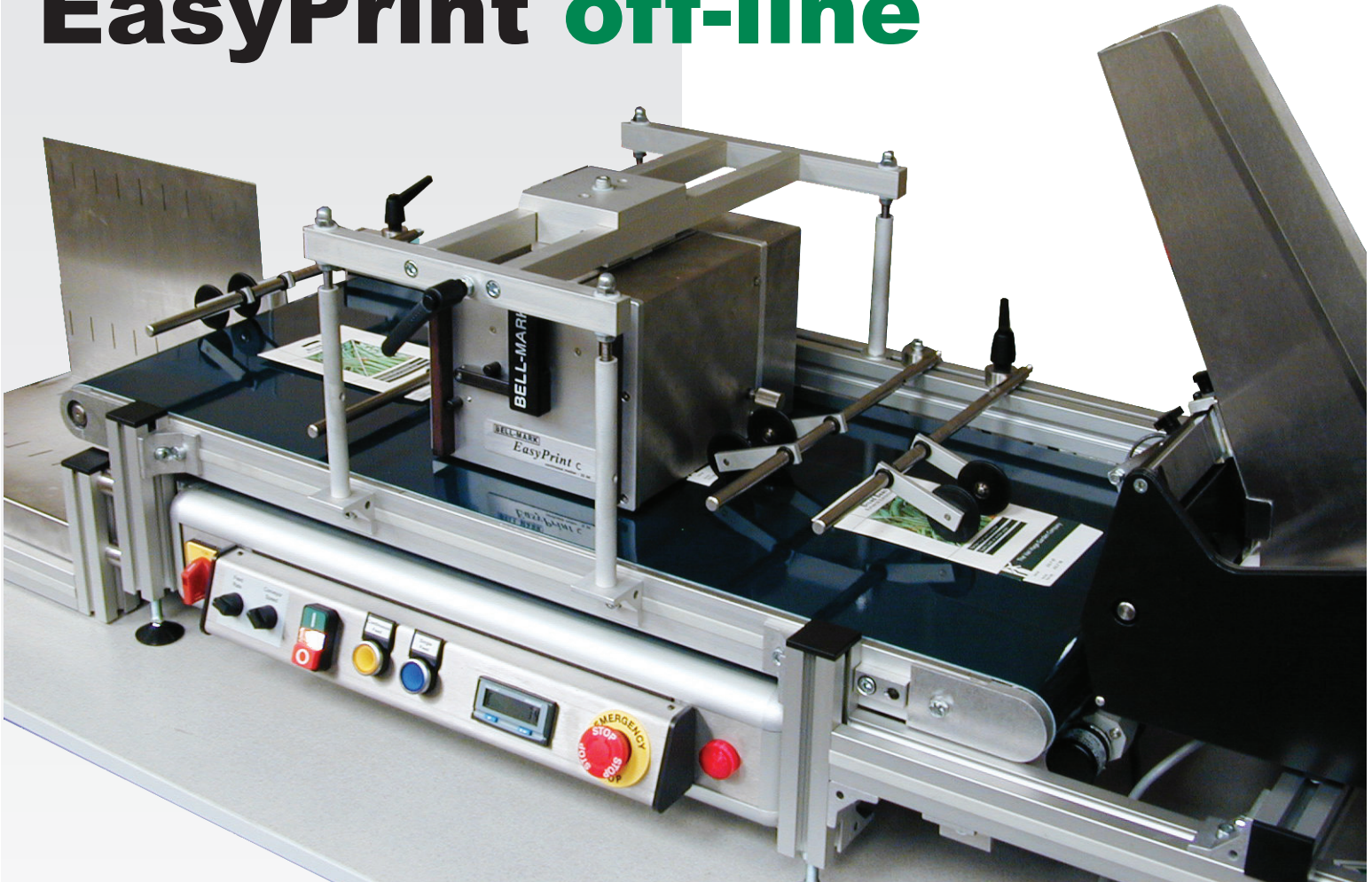
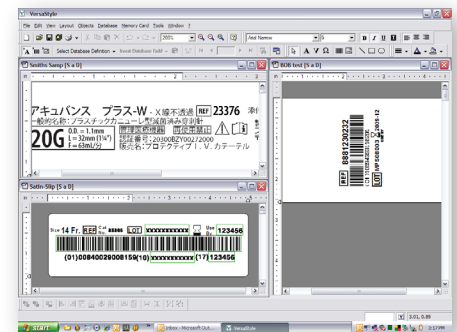


EasyPrint off-line



Off-Line Printing on Medical Pouches, Tyvek Sheets, Chipboard and Blister Cards

- Adjustable, Variable Speed, Advanced Feeding System
- Integral Sensor for Reliable Feeding
- Single or Continuous Operation
- 400mm wide by up to 1m long "High Grip" Conveyor
- Batch Counter
- Printed Material Catch Tray
- Bell-Mark EasyPrint C Thermal Transfer Printer Interface Package



Simple to use GUI for label design

Material Handling Specifications:

- Minimum Package Thickness: 0.1mm
- Maximum Package Size: 330mm long x 350mm wide

Electrical Requirement

110 or 240v, 50 or 60 Hz
Single phase, 2 amp.

Learn More, Call Today: 973-882-0202