

EasyPrint mlp X mini

Multi-Lane Traversing Thermal Transfer Printer

The **EasyPrint MLP mini** is designed for versatility. It is the ideal machine for in-line printing of batch codes, graphics, logos, sell-by dates, barcodes and other variable information. The thermal transfer technology prints directly onto packaging substrates such as poly films, foil, Tyvek®, medical paper, cartons and labels. The EasyPrint MLP mini provides solutions for printing and coding packages on various flexible packaging machines.



**IP65
Rated**



Multiple Lane Thermal Transfer Printing for:

- ✓ Pharmaceuticals
- ✓ Blister Packages
- ✓ Syringes
- ✓ Sutures
- ✓ Catheters
- ✓ Processed Meats
- ✓ Cheeses
- ✓ Pouches
- ✓ And more...



EasyPrint MLP mini VIDEO



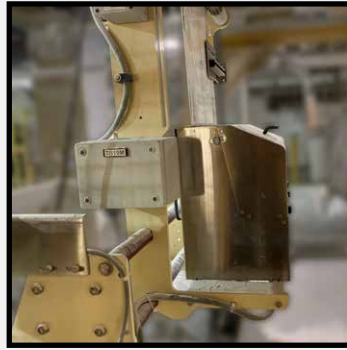
EasyPrint MLP WAS VIDEO

331 Changebridge Road, Pine Brook NJ 07058
PO BOX 2007 p:973-882-0202 f:973-808-4616 www.bell-mark.com

EasyPrint mlpX mini



Mounted on a HFFS medical device packaging line



MLP on a VFFS



MLP printing on bottom web



Mounted on a HFFS food packaging line

Benefits of Thermal Transfer Printing

Saves Time and Money

Thermal transfer eliminates costly setup and downtime of changing metal or rubber type on hot stamp and competitive coders. No messy inkjet cleanup or downtime. The MLP mini is an easy alternative to labels and pre-printed films.

More Prints Per Ribbon

Over 51,181 3/4 inch (19.05mm) prints per ribbon. The EasyPrint MLP mini has an automatic, highly accurate ribbon advance system that minimizes ribbon usage and delivers more prints per ribbon.

High Speed

Unique electronic design enables printing at speeds up to 600 mm/sec. across a web.

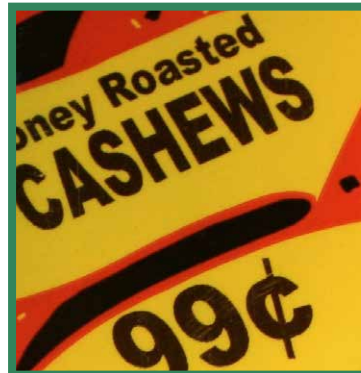
EasyPrint MLP mini - Technical Specs

Technology	Direct Thermal Transfer
Print Area	Up to 2 x 23.62 in (53 x 630 mm)
Print Speed	From 25 mm/sec up to 600 mm/sec
Print Density	300 DPI (12 dots/mm)
# of lanes to print	Up to 99
Graphic Logos	BMP, DXF, PCX, TIF, WMF, GIF
Bar Codes	EAN 13, EAN 8, Code 39, 2/5 interleave, UPC A, UPC E, Code 128, EAN 128, HIBC LIC 128, PZN, EAN add-on, Date Code, Data Matrix
Time/Date	Yes
Memory Storage	On Board USBx2, PCMCIA, or PC
Ribbon Length	3198 ft. (975 m)
Communication	Serial RS 232, USB, Parallel DB25, Ethernet
Display	7" (178mm) Color Touchscreen
Temperature	41°F-104°F (5°C-40°C)
Humidity	10-80% without condensation
Electrical	115/230 VAC, 50/60Hz, 400VA
Compressed Air	.353 CFM@ 95 PSI, Max (10LT/min @ 6 Bar)

Optional Upgrade Available



Advanced, IP-67 rated, 10.4" (264 mm) HMI



Sunrise 2027 Compliance

The EasyPrint MLP mini is designed for the global transition to 2D barcodes. **Future-proof your operation today** to ensure seamless traceability, FSMA 204 readiness, and enhanced consumer engagement ahead of the 2027 deadline.

SUNRISE 2027 COMPLIANT

Scan to learn more about Sunrise 2027

