

BELL-MARK

EasyPrint S35

Thermal Transfer Printer

MEMBER
PMMA
USA



The **EasyPrint S35** thermal transfer printer provides high-quality printing and coding for graphics, logos, sell-by dates, bar codes, batch codes, and all other types of variable data.

FEATURES

- Available in **Continuous** or **Intermittent Motion** printing operation
- 2" (53 mm) or 5" (128 mm) print head
- 7" (178 mm) color touch-screen control box
- Floating print head provides perfect alignment to substrate for high-quality printing
- Brackets available for all packaging machinery - new or retrofit
- Easily create labels using our VersaStyle label creation software
- Compact size and cassette design makes for easy installation and service
- Built-in ribbon saving feature resulting in lowest cost per print
- Optional **IP-65 rated** washdown version available to protect from harsh environments



SUBSTRATES

- Flexible Packaging Films
- Tyvek® & Medical Papers
- Labels
- Foils
- Cartons

TYPICAL USES

- Product/Company ID
- Scannable Bar Codes
- Real-time variable data

EasyPrint S35

The **EasyPrint S35** is available in a **continuous** or **intermittent motion** printing mode option with a **2" (53 mm)** or **5" (128 mm)** print head to suit your specific printing needs.



◀ **EasyPrint S35 i - Intermittent Motion**

The **EasyPrint S35 i** provides the highest quality thermal transfer printing for all intermittent motion packaging machines, baggers and labelers.

When printing intermittently, the print head strokes across the substrate while the substrate is not moving and returns home in preparation for the next print.

EasyPrint S35 C - Continuous Motion ▶

The **EasyPrint S35 C** provides high quality thermal transfer prints at the fastest speeds available (up to 1200 mm/sec!) for continuous motion flow wrappers, baggers, labelers, cartoners, and all continuous moving webs.

When printing continuously the printhead stands still while the packaging substrate is guided through. Printing takes place during the operation of the packaging machine.



EasyPrint S35 - Control Unit

The control unit of the **EasyPrint S35** features an intuitive user interface with a 7" (178 mm) color touch-screen display with preview for layout verification. This makes it very easy to keep control over the print configuration.

- **Washdown version available**

The **EasyPrint S35 X** offers the same 7" (178 mm) color touch-screen and intuitive user interface with an **IP-65 rating** for protection in harsh environments.



Optional Advanced HMI Upgrade Available



The advanced HMI features a 10.4" (264 mm) touch-screen as well as an **IP-67 rating** for washdown applications, further protecting it from harsh environments.

**Harsh Environment IP-65 RATED
Control Box & Print Head**

EasyPrint S35 X

The **EasyPrint S35 X** is available in a **continuous** or **intermittent motion** printing mode option with a **2" (53 mm)** or **5" (128 mm)** print head to suit your specific printing needs.

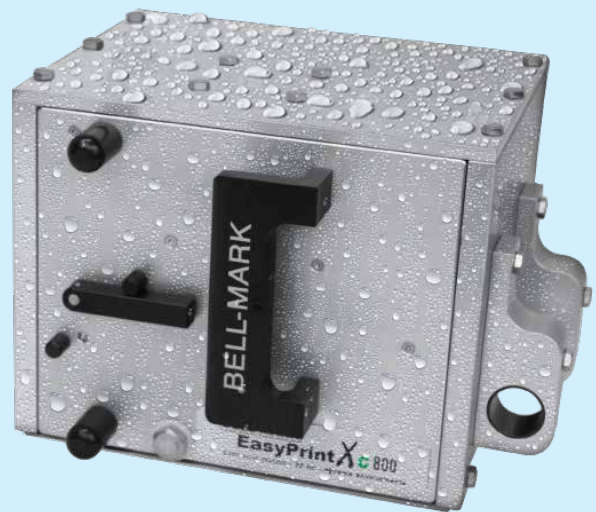


◀ **EasyPrint S35 X i - Intermittent Motion**

The washdown version of the **EasyPrint S35 i** printer. This printer offers the same print operation as the **EasyPrint S35 i** printer, but with an **IP-65 rating**, protecting it from harsh environments.

EasyPrint S35 X C - Continuous Motion ▶

The washdown version of the **EasyPrint S35 C** printer. This printer offers the same print operation as the **EasyPrint S35 C** printer, but with an **IP-65 rating**, protecting it from harsh environments.



◀ **EasyPrint S35 - Ribbon System**

All **EasyPrint S35** printers have a removable ribbon cassette that makes changing the thermal transfer ribbon incredibly easy.



EasyPrint S35 X - IP-65 Rated Washdown Cassette ▶

During the cleaning process, neither print module nor control unit must be dismantled or covered. Simply replace the ribbon cassette with the **EasyPrint S35 X** washdown cassette.



BELL-MARK

- ✓ SELL BY DATES
- ✓ LOT NUMBERS
- ✓ BAR CODES
- ✓ NUTRITIONAL FACTS



Sunrise 2027 Compliance

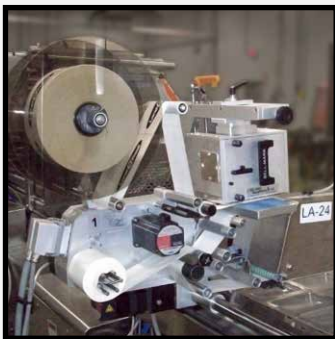
The **EasyPrint S35** is designed for the global transition to 2D barcodes. **Future-proof your operation today** to ensure seamless traceability, FSMA 204 readiness, and enhanced consumer engagement ahead of the 2027 deadline.

SUNRISE 2027 COMPLIANT



Scan to learn more about Sunrise 2027

PRINT INLINE, DIRECTLY ONTO PACKAGING MATERIAL



Mounted on a cross-web labeler



Mounted on a Continuous flow wrapper



Mounted on an HFFS packaging machine



Mounted on a Vertical Bagger

EasyPrint S35 - Technical Specs

Technology	Direct Thermal Transfer
Print Area	Intermittent Mode 2" Model: 2" x 4" (53 mm x 102 mm) 5" Model: 5" x 4" (128 mm x 102 mm) Continuous Mode 2" Model: 2" x 30" (53 mm x 762 mm) 5" Model: 5" x 30" (128 mm x 762 mm)
Print Speed	Up to 500 mm/sec
Print Density	300 DPI (12 dots/mm)
Ribbon Length	Up to 3198 ft. (975m)

Bar Codes	CODABAR, CODEABLOCK F, Code 128, Code 2/5 interleaved, Code 39, Code 39 extended, Code 93, Data Matrix, EAN 13, EAN 8, EAN ADD ON, GS1 DataBar, GS1 DataMatrix, GS1-128, Identcode, ITF 14, Leitcode, MAXI-CODE, PDF 417, Pharmacode, PZN7, PZN8, QR Code, UPC A, UPC E
Graphic Logos	BMP, DXF, PCX, TIF, GIF, PostScript, JPEG, Kodak Photo CD, PC Paintbrush, PNG, Targa Bitmap, Windows Metafile, WordPerfect Graphic
Communication	Serial RS 232, USB, Ethernet
Memory Storage	Compact Flash Card, USB, or PC
Time/Date	Yes
Temperature	41° F - 104° F (5°C - 40°C)
Electrical	115/230 VAC, 50/60Hz, 400VA
Compressed Air	.353 CFM @ 88 PSI, Max (10LT/min @ 6 Bar)



Scan the code for a video of the **EasyPrint S35**

Rev: 1.2