

BELL-MARK

InteliJet TM HD

Flexible, Reliable, High-Speed, High-Definition,
Full Color CMYK Piezo Inkjet Printing System



Utilizing the world's fastest and highest resolution inkjet print head technology, the InteliJet HD meets increasingly rigorous demands for printing dates, times, bar codes, serial numbers and text in Monochrome, 2-Color and Full CMYK color on coated and uncoated packaging web materials.

InteliJet **HD** REEL-TO-REEL

Reel-To-Reel Piezo Inkjet Printer

The **InteliJet HD Reel-to-Reel system** ensures smooth, continuous material handling with precise control. It manages large rolls, maintaining consistent tension to prevent substrate damage. Accurate web guiding keeps the material aligned, and the automated rewind system ensures efficient roll formation after printing. Designed for various flexible materials, the system minimizes waste and maximizes production efficiency. The system achieves printing speeds of up to 60 m/min and is available with 1-color, 2-color or full-color CMYK print head configurations.

Optional Vision System & Splice Table available.



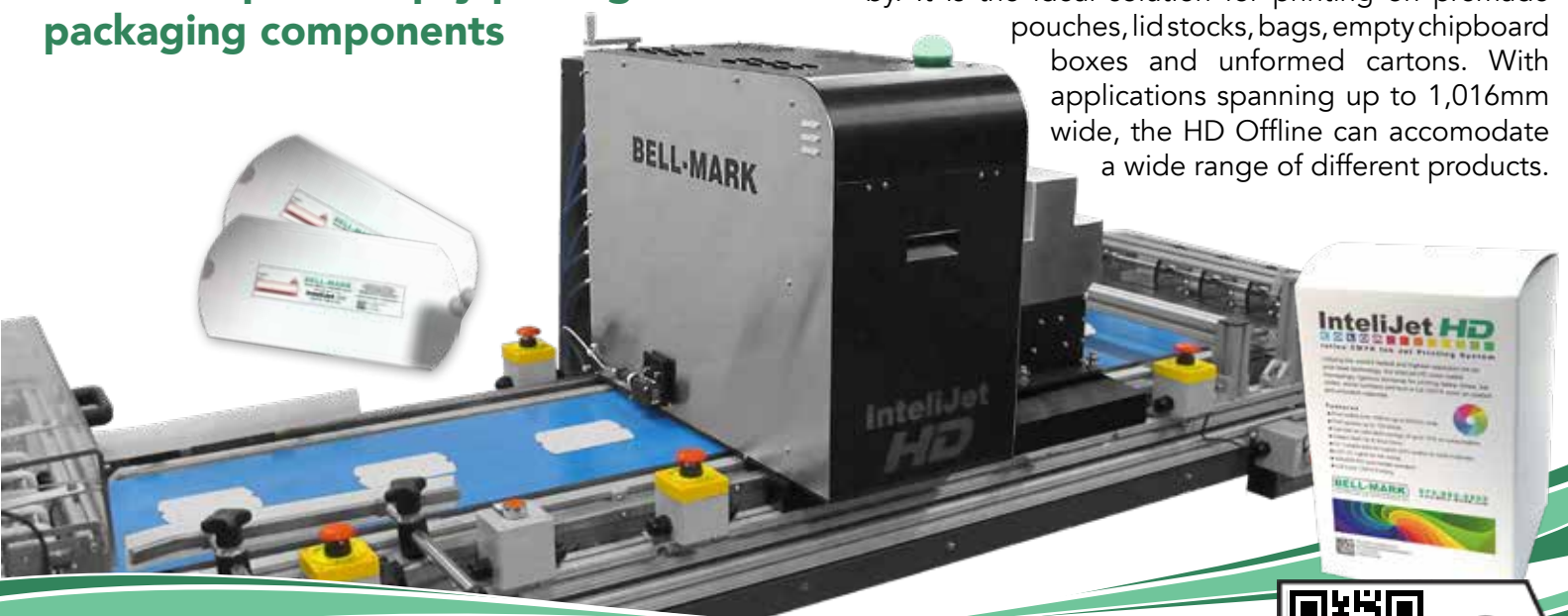
InteliJet **HD** OFF-LINE

Off-Line Feeder Printing System

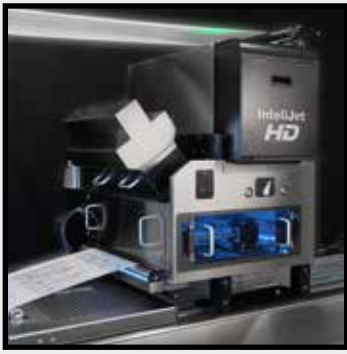
Feed and print empty packages & packaging components

Designed for conveyor & converting applications.

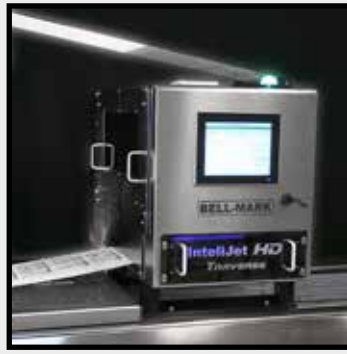
The **InteliJet HD Offline** uses continuous motion printing operation to print on products as they pass by. It is the ideal solution for printing on premade pouches, lidstocks, bags, empty chipboard boxes and unformed cartons. With applications spanning up to 1,016mm wide, the HD Offline can accommodate a wide range of different products.



HD Offline Video



HD ServoWAS on a HFFS



HD Traverse on a HFFS



HD ServoWAS on a Pharma Blister Pack Machine



HD Continuous on a Multifeeder

Benefits:

Efficient Workflow: As a fully integrated multi-color VDP (Variable Data Printing) ink jet system, the InteliJet HD works seamlessly with its PC-based print design software and touch screen controls to achieve an easy-to-use VDP workflow.

InteliJet HD offers a simple and flexible workflow with both on-line and off-line modes. Users can print VDP jobs directly from the client PC. The InteliJet HD software also enables users to design and modify the print output templates using its extensive array of editing tools.

The touchscreen software installed on the PC system is specifically designed for Variable Data Printing. It offers a user-friendly interface to interactively control the InteliJet system, monitor its status, and set its many powerful print options. The touchscreen software also allows users to prepare or add additional data while at the same time actively printing high productivity jobs.

- **Lowest TCO over other printing systems.**
- **Little to ZERO maintenance costs.**

Features

Print Head Module

- Up to 12 print heads
- Up to 630 mm of effective print width
- 600 DPI Printhead
- UV ink compatible.
- 4-Drop Sizes (6,7,11,14 pL)
- Full color CMYK printing

Integrated Ink System

- Unique BELL-MARK design.

Web Advance Module

- Web shuffle mechanism facilitates instant curing even when mounted on an intermittent motion host machine.
- Intelligent servo motor provides precise closed loop positioning for accurate print registration.

Print System Controller

- Advanced control of every aspect of the print and print head.
- Multi-head support.
- Multi-resolution support.
- High-speed print driver.
- Full feature render engine.
- High-speed variable data rip engine.
- Full control of print head heater temperature.
- Full control of print head grey levels.

UV Curing System

- Allows for printing on almost all surfaces.
- LED technology for long life and reduced power consumption.
- Ozone-free operation (no external venting required).
- Air-cooled, requiring no external compressed air or water for operation.

Print Control and Layout Software

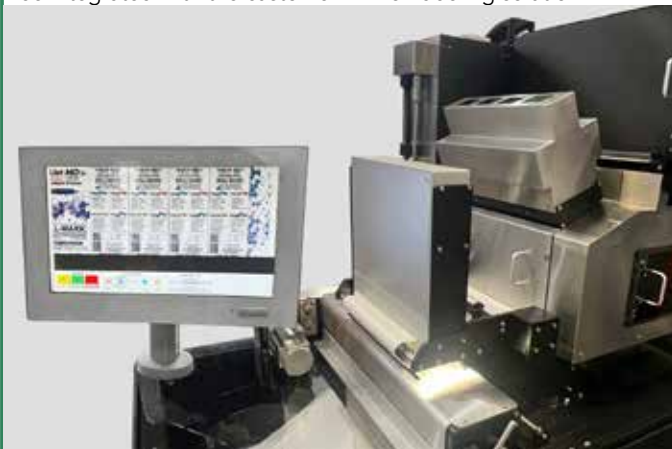
- BELL-MARK Layout / Label Creation Tool featuring the following specifications:
 - Multi-image importation, resizing, and rotation.
 - Step and repeat function.
 - Supports all the most common file types (BMP, TIFF, JPG, PNG, GIF, PDF).
 - Supports all types of variable information (Text, Barcodes, Date Codes, Serialization).
- Supports text file and user entry data sources.
- Supports over 80 types of barcodes including:
 - GS1-128, GS1-DataMatrix (2D)
 - EAN 13, EAN8, EAN14
 - Code 39, Code 128
 - UPC A
 - SSCC18
 - PZN
 - QR-Code

Networking

- Ethernet, TCP/IP, OPC UA (can be client or server), Serial (RS232), Hot Folder and more.

Optional Vision Inspection Solution

100% in-line inspection and barcode grading solution that can be integrated with the customer ERP or labeling solution.



Specifications:

- Print widths from 108 mm up to 630 mm wide.
- Print speeds up to 150 M/min.
- UV-cured ink, water-based dye and pigmented inks, or MICR ink.
- Instant start-up & instant shut-down.
- UV-curable inks for superb print quality on any substrate including poly, foil, medical paper, Tyvek, etc. Can even print on the seals with no adverse effects to the print or the seal gasket.
- LED lights for ink curing reduce energy consumption, have extremely small footprint, and have NO hazardous by-products.
- 600 DPI print heads print completely legible fonts at 3-point font size, including Asian characters.
- Network capable
- Completely programmable with auto date calculations, barcodes (GS1 data matrix, linear barcodes, etc.).
- Built-in Barcode Width Reduction feature for high quality barcodes on porous substrates.
- 208V 3-Phase 30A.
- Remote service capable.