

BELL-MARK

InteliJet LPc & InteliJet LPc PLUS

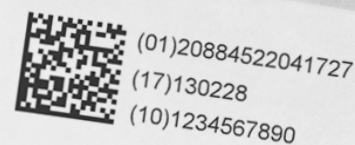
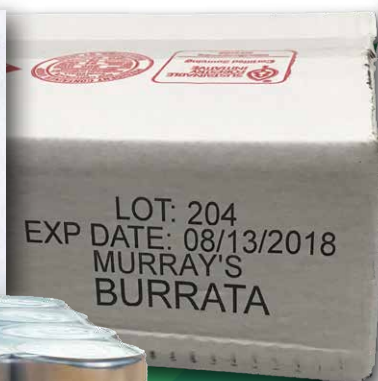
Thermal Inkjet 4.0 Print Solution

**High-Definition
Printing & Coding**

**Labels printed
directly on product**

Serialization Ready

- Print speeds up to 182 m/min
- 600x1200 DPI resolution
- 22mm print head width
- Up to 7mm throw distance
- Stitch up to 4 print heads, controlled by a single user interface
- Lower cost ink solution
- Higher production efficiency



Advanced TIJ 4.0 Print Technology



Print at incredible speeds of up to 182m/min (600 ft/min), double the performance of TIJ 2.5 technology, allowing you to meet and exceed your most ambitious productivity goals.

Achieve exceptional print resolution up to 600x1200 DPI, with laser-sharp variable data that meets the labeling requirements of the present and future, such as high-density 2D Barcodes required for Sunrise 2027. Its increased throw distance allows for more versatile and flexible printer placement within your production line.

The compact design of the print head makes it easy to fit into almost any existing packaging line. For even greater flexibility, the optional bench stand lets you set up the printer without needing any additional mounting space adjacent to your line.

**TIJ 2.5
Print
Head**
12.5mm
width

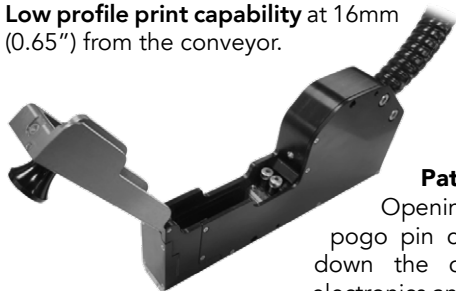


**IntelJet
LPc
TIJ 4.0
Print Head**
22mm width

Premium Print Heads

The LPc supports up to four 22mm print heads, which can be stitched together for wider print areas or kept separate for multi-side printing, all conveniently controlled by a single HMI.

Low profile print capability at 16mm (0.65") from the conveyor.

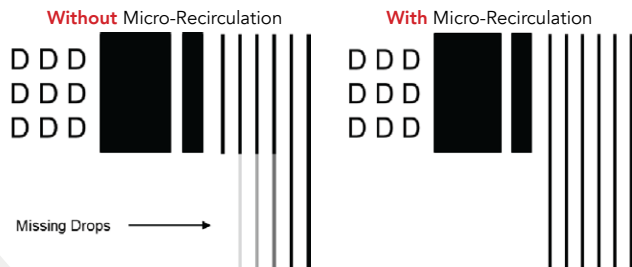
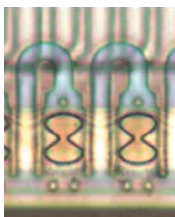


Patented Pen Stall Design

Opening the cover retracts the pogo pin contact board. This powers down the cartridge and shields the electronics and print cartridge from being damaged during insertion and removal.

Micro-Recirculation

The print heads utilize a micro-recirculation system designed to prevent ink from drying out during both brief pauses and extended periods of inactivity. By keeping the ink in constant motion, this technology effectively eliminates "decap" issues and significantly reduces the need for manual maintenance.



Print Controller with Integrated Ink System

Industrial-grade housing with a small footprint. Integrated ink docking station, power and monitoring LEDs.

Controller Dimensions:

330mm x 279mm x 241mm
(13in x 11in x 9.5in)

295mm (11.6")* color touch-screen:

The HMI provides a powerful touchscreen user interface, enabling users easily to monitor a wide array of operating conditions, such as job types and production counts.



Large 775mL Ink Reservoir reduces the frequency of replacements, which minimizes downtime and saves you money.

Built-In Label Creation Software: Users can easily preview and create print templates directly on the touchscreen or import them instantly via an Ethernet connection or a USB drive.

Connectivity Panel: Includes connections for Encoder, Sensor, Daisy Chain, I/O, Ethernet, and Stack Light.

Built-in Help System with "How To" videos that guide you through various maintenance procedures step-by-step.**

TeamViewer Access enables instant remote support & troubleshooting from our technical team.**

Windows Hot Folder: Automate your workflow by dropping files into a designated server folder for immediate and automatic processing.**

Full Audit Trail with a complete record of all user actions and system events for enhanced accountability.**

21 CFR Part 11 Compliant: Meet strict regulations with features that support electronic records & signatures, crucial for industries requiring stringent data integrity.**

*264mm (10.4") for the LPc Plus
**Available only on the LPc Plus



Next-gen Performance in Case Coding

Both Sides 2 x 44mm

22mm Print Head
Print Heads can be stitched together for seamless tall images up to 88mm, or individually placed for coding on two sides of a box.

3.0m or 0.7m Umbilical
Carries ink and electrical signals.

LPC Enclosure
Integrated controller with color touchscreen, and Vega software installed.

Vega Software
With its intuitive interfaces and solid, dependable functionality, Vega software is a high performer in the industrial printing systems arena. Create and manage print templates, and monitor production in real time.

775ml Ink Supply
A large capacity ensures minimal operational costs with little operator intervention. Changeover of the cartridge takes only seconds.

Possible LPC Configurations

Single Side 22mm

Both Sides 2 x 22mm

Single Side 88mm

Four LPC Print Heads installed on a Case Taper



LPc - Unmatched Capability

Horizontal Resolution	Max Speed	
	ft/min	m/min
1200	300	91
600	600	183

Characteristic	IntelJet LPc
Print Width	22mm - 88mm (7/8" - 3.5")
Maximum Resolution	600 x 1200 DPI
Drop Size	6 pl
Jetting Frequency	72 kHz
Throw Distance	Up to 7mm (1/4") *

* Print Speed Dependent

Printable Items	Lot Codes, Date codes, Alphanumerical, Barcodes, Bitmaps, PDF
Barcode Printing	EAN-13/EAN 8, UPC-A, Code128, ITF-14, ITF-2of5, Code39, Cryptocode, GS1 Data-matrix, QR (114 barcode support included)
Print Density	User Configurable (12.5% - 100%)
Umbilical Length	0.7m (3.2 ft) and 3m (9.8 ft)
Ink Types	Aqueous (Black and Spot Colors)
Ink Solution	775mL Ink Supply
Electrical Interface	Ethernet, I/O, Sensor, Encoder, Stack Light
Voltage	115V to 240V
Software Included	Vega from BELL-MARK
Connectivity	SQL, Remote Host, ERP
Languages	English, Spanish, German, French, Korean, Chinese, Portuguese
Data File Support	CSV, TXT, MDB, XLS, XLSX, ACCDB

Ink Usage Estimates

The following examples give an estimate of the number of prints you can expect before replacement of the Ink Supply. For more information, contact your **BELL-MARK** sales representative.

22mm tall - 165,500 Prints

44mm tall - 77,900 Prints

88mm tall - 42,800 Prints



Sunrise 2027 Compliance

Future-Proof your Packaging Line Today: Prepare for the global transition to data-rich 2D barcodes with **BELL-MARK Digital Printing**. The IntelJet LPc is fully compliant with GS1 Sunrise 2027 standards, enabling high-resolution printing of 2D barcodes. Future-proof your operation today to ensure seamless traceability, FSMA 204 readiness, and enhanced consumer engagement ahead of the 2027 deadline.

Scan the QR code to learn more about Sunrise 2027

