

InteliJet TS & InteliJet TS X

Small Character Thermal Inkjet Printers for Marking and Coding Applications

Easy installation, ZERO Maintenance and Extreme Versatility make the **BELL-MARK InteliJet TS** line of printers the ideal solution to deliver high-quality; Variable Data, Logos, Graphics, Lot Numbers, Date Codes and Bar Codes on virtually any surface.



(01)20884521085593 [LOT] 31301056
(17)220831
(10)31301056 [EST] 2022-08-31

BELL-MARK



Print Head Options

InteliJet TS 5

Standard 1/2 Inch Print Head

The **InteliJet TS** is designed for high-resolution coding on a wide variety of packaging substrates. It provides a low-maintenance solution for printing variable data, logos, & high-density barcodes directly onto materials, such as poly, foil, paper, Tyvek®, cartons, corrugated boxes, and more.



InteliJet TS 5L

Standard 1 Inch Print Head

The **InteliJet TS 5L** extends the capabilities of the TS series by offering double the print area. It is the ideal choice for applications requiring more extensive data or larger branding elements without the complexity of stitching multiple print heads.



InteliJet TS X 5

1/2 Inch Harsh Environment Print Head



The **InteliJet TS X 5** is engineered for the demanding conditions of the food packaging industry. Its rugged, all-metal design thrives in harsh environments, with an IP65 rating when running in print mode and an IP67 rating during washdown procedures.

InteliJet TS X 5L

1 Inch Harsh Environment Print Head



The **InteliJet TS X 5L** combines the industrial-grade durability of the TSX with a larger 1" print head, offering double the print area with the same harsh environment protection.

Traversing Systems

InteliJet TS CATraverse

Integrated traversing systems are available for the InteliJet TS & TSX print heads, allowing for precise printing of multiple rows across a single substrate. Choose between the cost-effective **InteliJet TS CATraverse**, or the more advanced **InteliJet TSX Traverse** which includes IP67-rated protection and other features such as bilateral printing.



InteliJet TS X TRAVERSE



User Interface

InteliJet TS Quattro

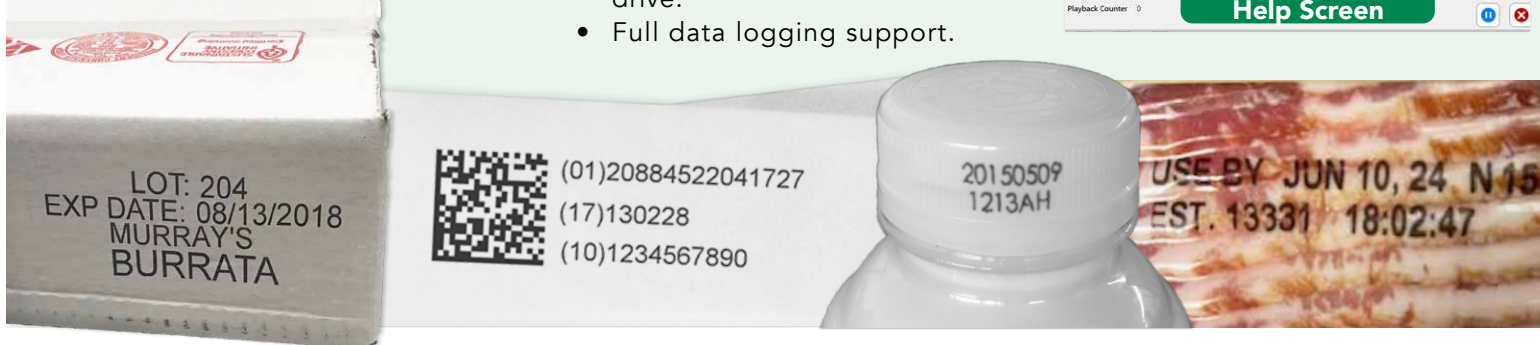
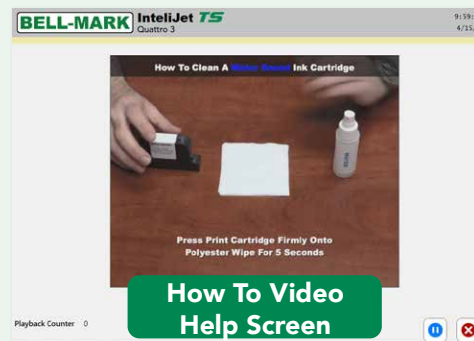
Harsh Environment HMI Control Box



SMARTCHIP
Automatic Ink Cartridge Tracking and Usage Management System

- 10.4" **IP67-Rated Touch Screen** with built-in label creation software & updated user-interface.
- Controls 4 or more print heads.
- Built in multi-axis traversing system controller.
- Saves optional traversing settings with label.
- Multiple customized password levels.
- Individual pen ink level monitoring & diagnostics.
- Internet enabled network support & software update.
- Full (VDP) Variable Data Printing Capable.
- PC control system with solid state drive.
- Full data logging support.

- Ethernet, RS232, or discrete I/O to connect to packaging line.
- Hygienic design.
- Interactive help system & how to videos.
- C.E. Marked.
- Smart Chip Ink Management System.



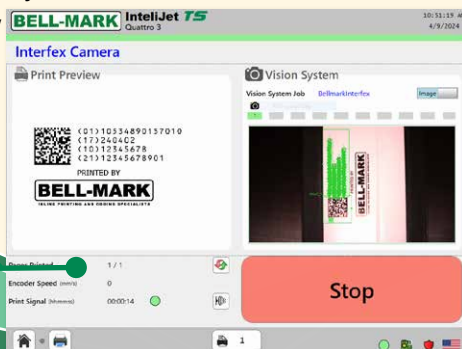
Vision Inspection System

Available as an optional upgrade integrated directly into the Printer UI for a truly all-in-one solution.

- Advanced optical character recognition deciphers a range of text.
- Comprehensive vision toolset addresses tasks of varying complexity.
- EasyBuilder development environment simplifies setup and offers rapid turnaround.
- **Maximize operational efficiency** - Leverage your existing workforce and keep your lines running with fast, intuitive job setup.
- Streamline integration - Take the guesswork out of image optimization & identify the correct combination of accessories in a few button clicks.

- **IP67-Rated**

Vision System Image Capture Screen in TS Quattro HMI



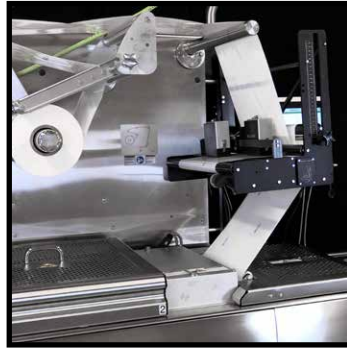
Package is damaged
GTIN: 01234567891231
LOT: 123456789 受け
MFG: 190724 たいさい。
EXP: 200725

GTIN: 01234567891231
LOT: 123456789
MFG: 190724
EXP: 200725

InteliJet TS Applications



Mounted on a Continuous Motion Flow Wrapper



Mounted with bracket to HFFS packaging machine



Cardboard box conveyor line



Printing on plastic bottles

SPECIFICATIONS

Orientation of Print

- Rotate (any direction in 1° increments)

Print Resolutions and Speeds

- 600x600 dpi at 125 ft/min, 38.1 m/min
- 600x300 dpi at 250 ft/min, 76.2 m/min
- 600x150 dpi at 500 ft/min, 152.4 m/min

Printable Items

- All twenty-four Windows Unicode languages
- Dynamic and fixed text
- Dynamic and fixed bitmaps
- Time/Date Stamp - fixed or real-time
- Barcodes including 2D GS1 Data Matrix
- Barcode Width Reduction feature for printing high quality barcodes on porous substrates

Printing Capability

- Length: 600 dpi = 27" (685.8mm)
 300 dpi = 54" (1371.6mm)
 Height: TS 5 = 0.5" (12.7mm) per print head
 TS 5L = 1.0" (25.4mm) per print head

Controllers/Drivers

- GUI interface software is included.

Communication Interfaces

- 10/100-Base T Ethernet, RS-232.

Maximize your InteliJet TS with BELL-MARK inks

- Resin inks for non-porous surfaces including poly & foil.
- Water-based inks for porous surfaces, including medical grade paper and Tyvek®.
- Unique formulas for optimum color, contrast or minimum bleed.
- Black ink is the default color, 14 spot color variations available to meet your specific requirements.
- PMS color matching available upon special request.
- UV and IR components for security and the ultimate in personalization.



Sunrise 2027 Compliant

- Designed for the global transition to 2D barcodes. **Future-proof your operation today** to ensure seamless traceability, FSMA 204 readiness, and enhanced consumer engagement ahead of the 2027 deadline.



AVAILABLE BULK INK SYSTEM

- Reduces the cost per print and change over time
- 475mL or 800mL bulk ink supply depending on the ink
- Can be used with a stationary or traverse print head

Font size	Print Size Examples
9 pt	JAN 07 2023 08:15
10 pt	LOT 66G7 EXP 07 JAN 2023
12 pt	USE BY 07 JAN 2023 7D 5766
18 pt	JAN 07 23 H7788857
32 pt	01/07/23 08:15
N/A	 (01) 012345678901231 (10) HJS649 (17) 28 02 2015 (21) 923Z845Y716W
1 inch	 Sunrise 2027 Compliant EXP 07 JAN 27 LOT BM12345

SUNRISE 2027 COMPLIANT



Scan to learn more about Sunrise 2027

Print Samples on Black

Bell-Mark Intelijet TSX IP-67 Thermal Inkjet Printer
 Use or Freeze By: 07/18/2022 Lot:12345 973-882-0202 www.bell-mark.com

Bell-Mark Intelijet TSX IP-67 Thermal Inkjet Printer
 Use or Freeze By: 07/18/2022 Lot:12345 973-882-0202 www.bell-mark.com

Print Samples on White

Bell-Mark IP-67 Intelijet TSX Thermal Inkjet Printer for Harsh Environments
 973-882-0202 www.bell-mark.com USE of Freeze BY: 12-25-2022

Bell-Mark IP-67 Intelijet TSX Thermal Inkjet Printer for Harsh Environments
 973-882-0202 www.bell-mark.com USE of Freeze BY: 12-25-2022

Bell-Mark IP-67 Intelijet TSX Thermal Inkjet Printer for Harsh Environments
 973-882-0202 www.bell-mark.com USE of Freeze BY: 12-25-2022

Bell-Mark IP-67 Intelijet TSX Thermal Inkjet Printer for Harsh Environments
 973-882-0202 www.bell-mark.com USE of Freeze BY: 12-25-2022